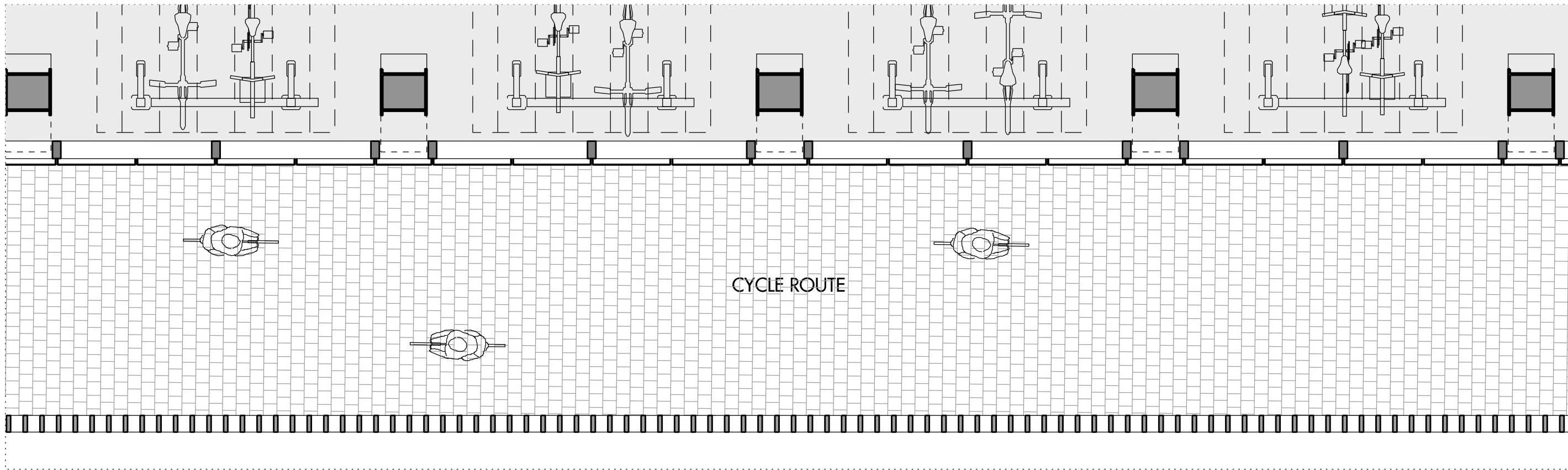
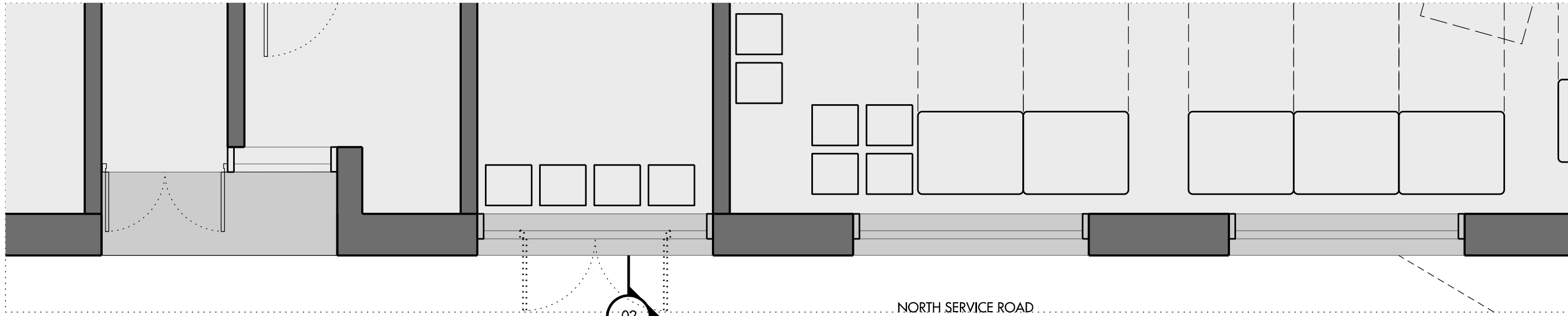




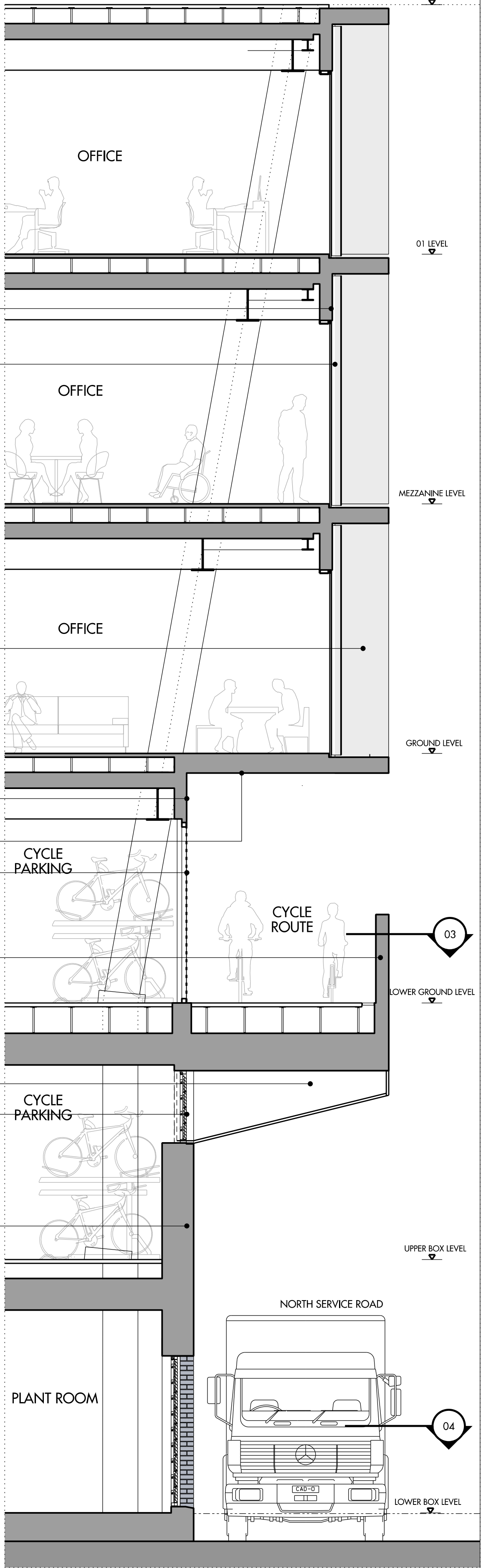
01 ELEVATION - PLINTH SOUTH WEST FACADE
SCALE 1:50



03 PLAN - PLINTH LOWER GROUND LEVEL NORTH WEST FACADE
SCALE 1:50



04 PLAN - PLINTH LOWER BOX LEVEL NORTH WEST FACADE
SCALE 1:50



02 SECTION PLINTH - NORTH WEST FACADE
SCALE 1:50

MATERIAL KEY

- 01 TERRACOTTA CLADDING
- 02 ALUMINIUM PANEL (PPC FINISH)
- 03 PERFORATED ALUMINIUM PANEL (PPC FINISH)
- 04 WHITE CONCRETE NODE
- 05 SILICON JOINTED GLAZING
- 06 BRICK CLADDING
- 07 METAL LOUVRES (PPC FINISH)
- 08 DARK PAINTED STRUCTURE
- 09 METAL CLAD PLANTERS
- 10 ALUMINIUM REVEAL (PPC FINISH)
- 11 GLAZED BALUSTRADE
- 12 VERTICAL FINS VENTILATION ZONE
- 13 CONCRETE WALL / UPSTAND / COPING
- 14 OPENING WINDOW / DOORS
- 15 ENTRANCE DOORS
- 16 METAL BALUSTRADE
- 17 WHITE SOFFIT
- 18 METAL PANEL PLANT SCREEN
- 19 SIGNAGE BEHIND GLAZING
- 20 HIGH LEVEL GLAZING

REV	DATE	DESCRIPTION	CMD	NOTES
P1	10.04.19	PLANNING	HF	
P2	17.07.20	PLANNING	HF	

0 0.5m 1m 1.5m 2m 2.5m 5m

telephone
facsimile
email

Allies and Morrison LLP
85 Southwark Street
London SE1 0HX
020 7921 0100
020 7921 0101
studio@alliesandmorrison.com
A&M JOB NO: 606

FIVE KINGDOM STREET
BAY STUDY - PLINTH AT NORTH
PLANNING
607_07_408
SCALE 1:50 @A1 1:100@A3